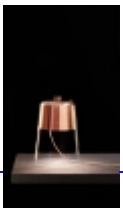


Born in London in 1969, he studied industrial design at the Royal College of Art and, after working briefly for the architect David Chipperfield, travelled in the US and Japan before returning to London as head of design at IDEO there. Colin, who was born in Los Angeles where she studied art history and architecture, moved to London in 1997 as an editor for Phaidon Press and to teach architecture at the Royal College of Art. Convinced of "the importance of design as a means of simplifying our lives in an inspirational way" Industrial Facility has developed products and environments for companies such as Epson, Magis, Lexon and Whirlpool, as well as Muji where Hecht and Colin are the creative directors for Europe.

Several new products have been launched, and many awards received. Sam Hecht appointed Senior Tutor of Design and Products at the RCA in 2008.



Semplice